

**RICOH**  
imagine. change.



***ScanSnap***  
***iX2500***



Connect your worlds  
with one touch.

# Digitize, share, and access scanned data instantly with our most connected scanner.

## **Quickly get from stacks to apps with the iX2500**

The iX2500 is the perfect companion in this era of diverse and flexible work styles. Just connect the ScanSnap iX2500 to your device to apply a profile with your scan settings and addresses to the scanner. Regardless of whether you are at home, the office, or a rental coworking space, you can save documents to your usual cloud service and run scans with your preferred settings.

## **Operate from the large 5-inch LCD touch screen, even without a PC or smartphone**

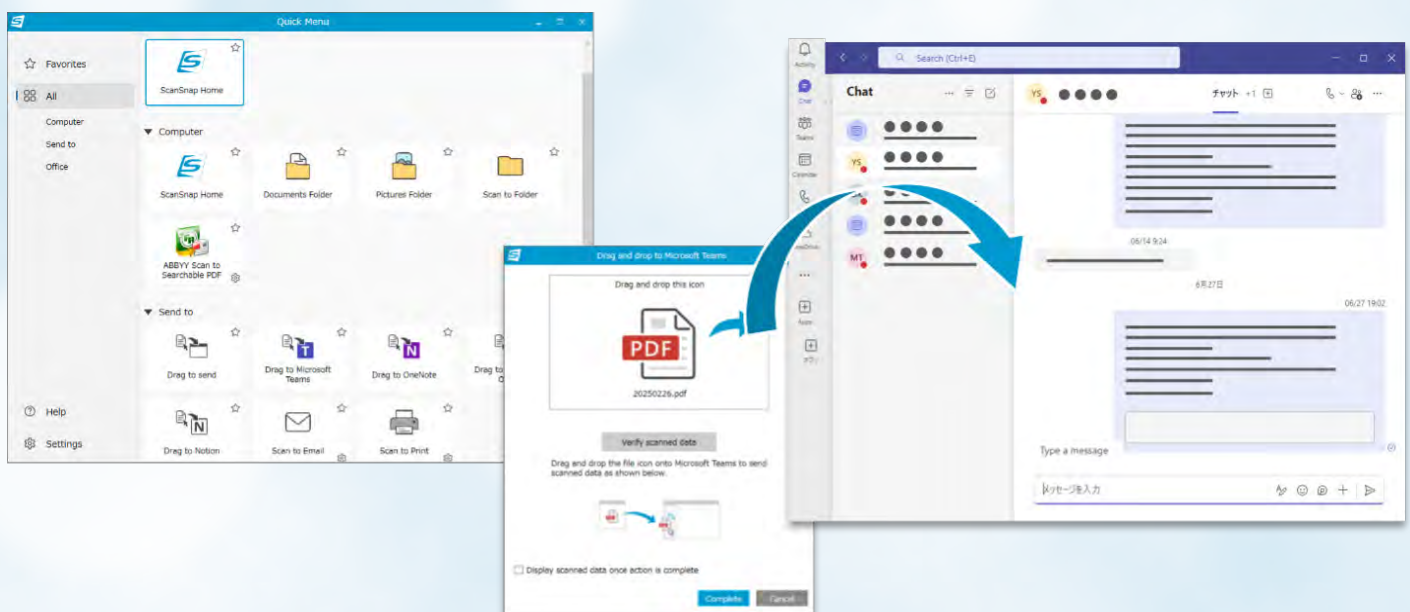
The scanner comes with a large 5-inch capacitive screen with improved response, enabling intuitive operation of the scanner. You can view scan profiles that were created on your PC or smartphone as visual icons on the touch screen. Once a scan profile has been made on a PC or smartphone and imported to the scanner, you only need to operate the touch screen to save data directly to a cloud service, or to send data via email. In addition, you can easily switch users on the touch screen to display your settings and icons. This makes it easy to share the scanner between colleagues and family members.





## Scan, drag, and drop with our new Quick Menu tool

The launch of the iX2500 introduces our new Quick Menu feature, which allows users to easily access all the save destinations available through ScanSnap without any setup required. Seamlessly save to dozens of cloud services, scan to email, and more. On top of that, the Quick Menu features a “drag and drop” option to intuitively drag your scan anywhere you would like, including Microsoft® Teams, Notion®, Google Drive™, Slack®, etc. The Quick Menu also learns your favorite destinations and will suggest it as an integrated profile so that you can just click the “scan” button and have the file go straight to where you want it, boosting productivity.



## Comfortable scanning with ultra high speed and large capacity

### High performance as a flagship model

The iX2500 thrives at 45 ppm and can hold up to 100 A4 sheets at a time. Even when the Receipt Guide is installed, 50 A4 sheets can be loaded, making it easy to scan large volumes of documents.

### Stable paper feeding technology

The iX2500 is equipped with the brake roller feature and the ultrasonic multi-feed sensor. These features ensure smooth and stable paper feeding and reliable multi-feed detection. Additionally, the scanner's skew detection function stops feed operation to prevent damage if paper is fed at an angle, thereby protecting your important documents.

Microsoft Teams are trademarks of the Microsoft group of companies.

Notion and the Notion logo are trademarks of Notion Labs, Inc., and are used here with permission.

Slack is a registered trademark and service mark of Slack Technologies, Inc.

## Wi-Fi connectivity for both smartphones and PCs

The ScanSnap iX2500 supports Wi-Fi (2.4 GHz and 5 GHz bands) and enables wireless saving to smart devices and the cloud without needing a PC.

With Wi-Fi 6 (IEEE 802.11ax) compatibility, the scanner ensures robust and stable communication, even in environments with radio interference and congestion.

Additionally, it supports the WPA3 security protocol and TLS 1.3, safeguarding your valuable information.

## The all-in-one solution for document management

ScanSnap Home<sup>\*1</sup> is a comprehensive document management software specially designed for ScanSnap scanners. Easily manage, edit, and utilize scans with just one application. Both a PC version and mobile version are available.



### Accommodates any scanning environment

- Create profile icons to preset save-to destinations, cloud services, color settings, and much more.
- Save as PDF, searchable PDF, and JPEG for versatile utilization of scanned data.
- For users of ScanSnap Home (for PC), the Quick Menu enables you to select saving and integration destinations after scanning, which raises productivity.

### Improved ScanSnap mobile app with expanded capabilities

- Intuitive user interface for easy scanning
- Scanned data can be saved in PDF, JPG, and searchable PDF formats
- Can create multiple profiles even on a mobile device (only iX2500)
- Retrieve information such as name and phone number from a business card and utilize data for calling and sending an email
- Set up ScanSnap Cloud without a PC



## Environmentally conscious

The scanner body is made of 25% or more recycled plastic materials, and the packaging materials, etc., are free of virgin plastics derived from fossil resources.<sup>\*2</sup>

<sup>\*1</sup> There are some differences in supported features between the PC and mobile versions. Also, some features are unavailable in regions where ScanSnap Cloud is not supported. For details, please visit our website at: <https://www.pfu.ricoh.com/global/scanners/scansnap/sshome/#tab-b-05>. <sup>\*2</sup> Pre-consumer materials, which have not been used by consumers and are generated during the manufacturing and molding processes, are used.

General Specifications

Product name			ScanSnap iX2500 (White/Black)		
Scanner type			ADF (Automatic Document Feeder)/Manual Feeder, Duplex		
Scanning color mode			Color, Grayscale, Monochrome, Automatic (Color/Grayscale/Monochrome <sup>1</sup> detection)		
Image sensor			CIS x 2 (Front x 1, Back x 1)		
Light source			3 Color LED (Red/Green/Blue)		
Optical resolution			600 dpi		
Scanning speed <sup>2</sup> (A4 portrait)	Auto mode (Default) <sup>3</sup>		Simplex/Duplex: 45 ppm		
	Normal mode		Simplex/Duplex: 45 ppm (Color/Grayscale: 150 dpi, Monochrome: 300 dpi)		
	Better mode		Simplex/Duplex: 45 ppm (Color/Grayscale: 200 dpi, Monochrome: 400 dpi)		
	Best mode		Simplex/Duplex: 45 ppm (Color/Grayscale: 300 dpi, Monochrome: 600 dpi)		
	Excellent mode <sup>3,4</sup>		Simplex/Duplex: 13 ppm (Color/Grayscale: 600 dpi, Monochrome: 1,200 dpi)		
Document size	Normal scan <sup>5</sup>		Minimum: 50.8 x 50.8 mm (2 x 2 in.) Maximum: 216 x 360 mm (8.5 x 14.17 in.)		
	Manual scan		Minimum: 50.8 x 50.8 mm (2 x 2 in.) Maximum: 216 x 360 mm (8.5 x 14.17 in.) <sup>7</sup>		
	With Photo Carrier Sheet (Option) <sup>1</sup>		Minimum: 25.4 x 25.4 mm (1 x 1 in.) Maximum: 127 x 178 mm (5.0 x 7.0 in.)		
	With Carrier Sheet (Option) <sup>1</sup>		Minimum: 25.4 x 25.4 mm (1 x 1 in.) Maximum: 297 x 431.8 mm (11.69 x 17 in.)		
	With Booklet Carrier Sheet (Option) <sup>1</sup>		-		
	Long paper scanning <sup>6</sup>	PC	3,000 mm <sup>8</sup> (863 mm in 32-bit)		
Smart Device / Cloud		Duplex: 863 mm Simplex: 1,726 mm			
Paper weight (Thickness)			40 to 209 g/m <sup>2</sup> (11 to 56 lb) A8 size or less: 128 to 209 g/m2 (34 to 56 lb) Cards: 0.76 mm or less (Compliant with the ISO7810 ID-1 type) (Includes embossed cards in landscape orientation)		
ADF capacity <sup>9</sup>			100 sheets (A4, 80 g/m <sup>2</sup> or 20 lb)		
Interface	USB	USB3.2 Gen1x1 / USB3.1 / USB3.0 / USB2.0 / USB 1.1 (Connector Type: Type-C)			
	Wi-Fi	IEEE802.11a/b/g/n/ac/ax Frequency band: 2.4 GHz / 5 GHz <sup>10</sup>			
Wi-Fi Interface			Access Point Connect Mode (Infrastructure mode) <sup>11</sup>		
LCD			5 in. color IPS touch screen		
Power requirement			AC 100 to 240 V, 50/60 Hz		
Power consumption	Operating	Approx. 17 W			
	Sleep mode (USB connection)	1.0 W or less			
	Sleep mode (Wi-Fi connection)	1.4 W or less			
	When the power is off (default Normal mode)	0.2 W or less			
	On standby in Fast mode (Wi-Fi off)	1.0 W or less			
	On standby in Fast mode (Wi-Fi connection)	1.4 W or less			
Operation environment			Temperature: 5 to 35 °C (41 to 95 °F) Relative humidity: 20 to 80% (Non-condensing)		
Dimensions (W x D x H)			Min.: 292 x 161 x 159 mm (11.50 x 6.34 x 6.26 in.) (storage size) Max.: 292 x 477 x 286 mm (11.50 x 18.78 x 11.26 in.) (when the extension and the stacker are extended)		
Device weight			3.5 kg (7.7 lb)		
Environmental compliance			ENERGY STAR/RoHS		
Multifeed detection			Overlap detection (Ultrasonic sensor), Length detection		
Driver			ScanSnap Home (ScanSnap specific driver) •Windows: Does not support TWAIN/ISIS™ •macOS: Does not support TWAIN		

<sup>\*1</sup> Available only when connecting to a computer. <sup>\*2</sup> Scanning speeds may vary due to the system environment. For details, please visit our website at: <https://www.pfu.ricoh.com/global/scanners/scansnap/>. <sup>\*3</sup> Scans will be performed in 300 dpi (Color/Grayscale) or 600 dpi (Monochrome) if shorter sides are less than 105 mm, and in 200 dpi (Color/Grayscale) or 400 dpi (Monochrome) if shorter sides exceed 105 mm. <sup>\*4</sup> Feature is unavailable when using ScanSnap Cloud. <sup>\*5</sup> A3 scans are possible with use of A3 carrier sheets. <sup>\*6</sup> A document longer than A4 paper can be scanned one by one. Available in all modes except for "Excellent mode". <sup>\*7</sup> A3, B4, 11 x 17 in. document sizes are required to be folded in half. <sup>\*8</sup> Up to 360 mm in Excellent mode. <sup>\*9</sup> Maximum capacity varies, depending upon paper weight. <sup>\*10</sup> Availability of 5 GHz Wi-Fi may vary depending on region. <sup>\*11</sup> Access Point Connect Mode requires a Wi-Fi access point or router.

Consumables

Description	Part number	Remarks
Roller Set	PA03860-0001	Lifetime: Every 200,000 sheets <sup>*1</sup>
Cleaner F1	PA03950-0352	100 ml bottle For use on the Brake roller and Pick roller
Cleaning Wipe	PA03950-0419	24 packets For use on the Brake roller and Pick roller
Cleaning Paper	CA99501-0012	10 sheets Use this non-woven sheet with Cleaner F1

<sup>\*1</sup> Replacement cycles are guidelines for using A4 documents (80 g/m<sup>2</sup> [20 lb]). These cycles vary depending on the type of documents scanned, how often the scanner is used and cleaned, and your operating environment. <sup>\*2</sup> It is recommended to use original or approved accessories for consumables, options and cleaning kits, specially designed for your device. Device failures, troubles and damages arising from use of OEM or 3rd Party accessories may render your warranty invalid and incur charges for repair even during the warranty period.

Options

Description	Part number	Remarks
Carrier Sheets <sup>*1</sup>	PA03360-0013	Contains 5 sheets supporting photographs and various document sizes
Photo Carrier Sheets	PA03770-0015	Contains 3 sheets supporting photographs (E-size, L-size, King-size), postcards, and business cards
ScanSnap Bag	PA03951-0651	Stores one ScanSnap unit and accessories

<sup>\*1</sup> Although ScanSnap Carrier Sheets have a listed lifespan of 500 scans, the lifespan may vary with usage. ScanSnap Carrier sheets are intended to scan paper documents with weights of 209 g/m<sup>2</sup> or less. They also support the scanning of folded documents that are as large as 216 x 297 mm.

ScanSnap iX2500 System Requirements

• Windows

Operating systems		Windows 11 (64-bit) Windows 10 (32-bit / 64-bit) <sup>*1,2</sup>
Hardware requirements <sup>*3</sup>	CPU <sup>*4</sup>	Intel or Intel-compatible processors
	Display resolution	1,024 x 768 pixels or more
	Disk capacity <sup>*5,6</sup>	3.8 GB or more of free disk space

<sup>\*1</sup> ScanSnap scanners do not run with Windows 10 Enterprise 2015 LTSB and Windows 11 and 10 ARM-based PCs such as Surface Pro X (Microsoft). <sup>\*2</sup> Operate Windows in desktop mode. <sup>\*3</sup> The ScanSnap device may not work if the connected computer does not meet these requirements. <sup>\*4</sup> Scanning speeds may vary due to the system environment. <sup>\*5</sup> Indicated disk capacity requirements apply when downloading ScanSnap Home (for PC). <sup>\*6</sup> .NET Framework 4.8 or later must be installed. If it is not installed, it is installed with ScanSnap Home (for PC). Up to 4.5 GB of disk space is required for the installation. <sup>\*7</sup> Please refer to the ScanSnap website for the latest support information of the driver and applications. Compatibility may differ depending on the software's version. <sup>\*8</sup> The system requirements may change depending on the support policies of the above system and third-party software.

• Mac

Operating systems		macOS Catalina 10.15 or later
Hardware requirements <sup>*1</sup>	CPU <sup>*2,3</sup>	Intel processor or Apple silicon
	Display resolution	1,024 x 768 pixels or more
	Disk capacity	2.5 GB or more of free disk space

<sup>\*1</sup> The ScanSnap device may not work if the connected computer does not meet these requirements. <sup>\*2</sup> The ScanSnap device also operates with Apple Silicon-based Mac computers. Please visit the ScanSnap website for latest support information. <sup>\*3</sup> Scanning speeds may vary due to the system environment. <sup>\*4</sup> Compatibility may differ depending on software versions. Please visit the ScanSnap website for latest information on driver and application support. <sup>\*5</sup> The system requirements may change depending on the support policies of the above system and third-party software.

• Other Devices

iOS/iPadOS	iOS 16 or later/iPadOS 16 or later
Android™	Android 10 or later

<sup>\*</sup> Wi-Fi environment is required.

• Software

Windows	Mac	iOS/iPadOS	Android™/ChromeOS
ScanSnap Home (for PC) <sup>*1</sup>		ScanSnap Home (for mobile)	
Kofax Power PDF Standard <sup>*2</sup>	Kofax Power PDF Standard for Mac <sup>*2</sup>	-	-
ABBYY FineReader for ScanSnap™		-	-

<sup>\*1</sup> ScanSnap Home (for PC) installation requires a computer and Internet. Please visit the company website for download information. <https://www.pfu.ricoh.com/global/scanners/scansnap/g-support/en/> <sup>\*2</sup> Please refer to the included license certificate to download the software. <sup>\*3</sup> The Internet is required to download and update the software. We recommend updating to the latest version using the Internet connection.

Accessories


•Safety Precautions •AC Cable •AC Adapter •USB Cable •Receipt Guide
---

This scanner is designed to digitize materials that can be reproduced lawfully, in accordance with applicable copyright regulations and other laws. ScanSnap users are responsible for how they use this scanner. It is imperative that ScanSnap users comply with all applicable local rules and laws, including, without limitation, copyright laws when using this scanner.

<sup>\*ABBYY™ FineReader™ Engine © ABBYY. OCR by ABBYY. ABBYY and FineReader are trademarks of ABBYY Software, Ltd. which may be registered in some jurisdictions. Android and Chrome OS are trademarks or registered trademarks of Google LLC. Intel is a trademark of Intel Corporation or its subsidiaries. ISIS is a trademark of Open Text. Mac, macOS, iPad and iPhone are trademarks of Apple Inc., registered in the U.S. and other countries. Kofax and Power PDF are trademarks or registered trademarks of Kofax Inc. in the United States and other countries. Microsoft and Windows are trademarks of the Microsoft group of companies. ScanSnap, the ScanSnap logo and ScanSnap Home are registered trademarks or trademarks of PFU Limited. Other company names and product names are the trademarks or registered trademarks of the respective companies.</sup>



PFU Limited has determined that this product meets the ENERGY STAR guidelines for energy efficiency. ENERGY STAR and the ENERGY STAR mark are trademarks or registered trademarks of the U.S. Environmental Protection Agency.

 Safety Precautions	Be sure to carefully read all safety precautions prior to using this product and use this device as instructed.	Do not place this device in wet, moist, steamy, dusty or oily areas. Using this product under such conditions may result in electrical shock, fire or damage to this product.
--	---	---

RICOH and RICOH logo are registered trademarks of Ricoh Co., Ltd. Other product names are the trademarks or registered trademarks of the respective companies.

Specifications are subject to change without notice. Visit the ScanSnap website for more information. <https://www.pfu.ricoh.com/global/scanners/scansnap/>