

# FUJITSU Image Scanner fi-6400

## Cost Efficient High Volume Production Scanner



## ■ fi-6400 Features

### ■ Advanced Features to Maximize Your Productivity

#### ● Large volume hopper and high speed scanning

To boost the efficiency of large volume scanning at centralized operation, up to 500 sheets can be loaded to the hopper at a time. Together with the blazing scanning speed of 100 ppm (color, A4 size, duplex, 200/300 dpi, landscape), maximum productivity can be achieved.

#### ● Advanced feeding mechanism

The fi-6400 is capable of digitizing a variety of document types used in every scenario from ultra-thin receipts to thick document (20-209.3 g/m<sup>2</sup>). In addition, this scanner is equipped with reliable "paper protection function" to minimize the risk of documents being damaged even during the high speed scanning.

### ■ Remarkable small design

Having a front loading feeding mechanism and low height compact design, the fi-6400 allows operator to perform scanning tasks while sitting at the desk. The scanner is designed to minimize the device's height to allow user to load and remove scanned documents with ease. These greatly reduce the stress of operator who tends to operate for long hours.



### ■ Leading Hardware Technology Paired with Expert Software

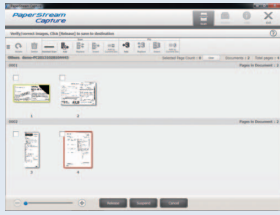
The Fujitsu fi-6400 scanner empowers efficient centralized batch scanning. It includes advanced image processing and capturing applications including PaperStream IP and PaperStream Capture, and Scanner Central Admin, providing users with the most powerful, efficient and easy-to-use image enhancement solutions to get organizations up and scanning quickly and easily.

#### ● PaperStream IP - Automatically creates high quality image data without manual adjustments

The scanner driver PaperStream IP, which supports TWAIN/ISIS, saves the hassle to fine adjusting the document for OCR process. It automatically converts the images into exceptionally clean images, accelerating OCR even when scanning wrinkled/soiled document or document with background.

#### ● PaperStream Capture - Made easy batch scan, validate and confirm document content

PaperStream Capture is an application to scan and manage the scanned data using fi Series scanners. Whether it is adjusting the scanning settings or performing batch scanning, you can complete the tasks easily with the user-friendly UI. With the seamless linkage with PaperStreamIP, you can perform high quality image processing and batch scanning at the same time. With just a few easy settings, PaperStream Capture saves time to sort and save scanned documents with its automated process. As the "Automatic Image Quality Checker" automatically detects folded and damaged document, scanned image can be confirmed effortlessly.



#### ● Scanner Central Admin - Efficiently manage multiple scanners

Even when installing several scanners, performing the same adjustments to every scanner is unnecessary. Using the bundled Scanner Central Admin, up to 1,000 scanners can be managed from one location. In addition, the usage status is traced, so periodic replacement of consumables can be performed smoothly.

### ■ Automatic stacker

Automatic Stacker ensures all your scanned documents tacked neat and tidy.

### ■ Intelligent multifeed function

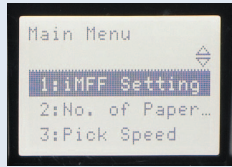
The acclaimed "Intelligent multifeed function", which is available to high-end models, simplifies pre-scanning preparation and improves efficiency by ignoring documents that tend to trigger false multifeed alerts, such as photo and sticky note attached documents.

### ■ Check scanner status and settings from an ease to navigate LCD panel

### ■ Simple but very sturdy construction with a wide flip-up cover for easy cleaning

### ■ Near silent running makes it perfect for office tasks

### ■ Post imprinters (Front-side, Back-side) support (Option)



## ■ Technical Specifications

Description		fi-6400
Supported operating systems		Windows® 8/8.1 (32-bit/64-bit), Windows® 7 (32-bit/64-bit), Windows Vista® (32-bit/64-bit), Windows Server® 2012, Windows Server® 2008 (32-bit/64-bit)
Scanner type		ADF (Automatic Document Feeder) + Manual Feed
Scanning modes		Simplex / Duplex, Color / Grayscale / Monochrome
Image sensor type		Color CCD (Charge-coupled device) x 2 (front x 1, back x 1)
Light source		White LED array <sup>*1</sup>
Multifeed detection		Ultrasonic multi-feed detection sensor x 3, Paper detection sensor
Document size	Maximum	A3 Portrait (297 x 420 mm or 11.7 x 16.5 in.)
	Minimum	Double letter (279.4 x 431.8 mm or 11 x 17 in.)
	Long paper scanning (Maximum) <sup>*2</sup>	A8 Portrait (52 x 74 mm or 2 x 3 in.)
Paper weight (Thickness)		Less than A5 size: 0.050 to 0.25 mm (41 to 209 g/m <sup>2</sup> , or 11 to 56 lb) A4 to A5 size: 0.025 to 0.25 mm (20 to 209 g/m <sup>2</sup> , or 5.4 to 56 lb) Over A4: 0.050 to 0.25 mm (41 to 209 g/m <sup>2</sup> , or 11 to 56 lb)
Scanning speed (A4 Landscape) <sup>*3</sup>	Color <sup>*4</sup>	Simplex: 100 ppm (200/300 dpi), Duplex: 200 ipm (200/300 dpi)
	Grayscale <sup>*4</sup>	
	Monochrome	
Scanning speed (A4 Portrait) <sup>*3</sup>	Color <sup>*4</sup>	Simplex: 85 ppm (200/300 dpi), Duplex: 170 ipm (200/300 dpi)
	Grayscale <sup>*4</sup>	
	Monochrome	
Paper chute capacity (A4 Landscape) <sup>*5</sup>		500 sheets (A4: 80 g/m <sup>2</sup> or 20 lb)
Expected daily volume		40,000 sheets/day
Background colors		White / Black (Selectable)
Optical resolution		600 dpi
Output resolution <sup>*6</sup>	Color (24-bit)	50 to 600 dpi (adjustable by 1 dpi increments), 1,200 dpi (driver) <sup>*7</sup>
	Grayscale (8-bit)	
	Monochrome (1-bit)	
Output format		Color: 24-bit, Grayscale: 8-bit, Monochrome: 1-bit
Internal video processing		1,024 levels (10-bit)
Interface		USB2.0
Connector shape		B type
Image processing functions		Auto color detection, Automatic page size detection, De-skew, Automatic orientation, Upper lower separation, Multi-image, Blank page skip, Error diffusion, Dither, Dropout color (R, G, B, None, White, Specified, Saturation), Image emphasis, Simplified DTC, Advanced DTC, iDTC, sRGB
Power requirements		AC 100 to 240 V ± 10 %
Power consumption		Operating mode: 200 W or less Sleep mode: 3.2 W or less Auto Standby (OFF) mode: Less than 0.5 W
Operating environment		Temperature: 15 to 35 °C (59 to 95 °F) Relative humidity: 20 to 80% (Non-condensing)
Dimensions: Width x Depth x Height <sup>*8</sup>		460 x 430 x 310 mm (18.1 x 16.9 x 12.2 in.)
Weight		32 kg or less
Included software / drivers		PaperStream IP (TWAIN) driver, PaperStream IP (ISIS) driver, 2D Barcode for PaperStream, Software Operation Panel, Error Recovery Guide, PaperStream Capture, Scanner Central Admin Agent
Environmental compliance		ENERGY STAR® and RoHS
Included items		AC cable, USB cable, Setup DVD-ROM, 2D Barcode for PaperStream Setup CD-ROM

\*1 CLASS 1 LED PRODUCT

\*2 Capable of scanning documents that exceed A3 size in length. Documents that exceed 431.8 mm (17 in.) are limited to 400 dpi for lengths up to 863 mm (34 in.). Documents between 863 mm and 3,048 mm (120 in.) in length are limited to 300 dpi.

\*3 Actual scanning speeds are affected by data transmission and software processing times.

\*4 JPEG compressed figures.

\*5 Maximum capacity varies, depending upon paper weight.

\*6 Maximum output resolutions may vary, depending upon the size of the area being scanned and whether the scanner is scanning in simplex or duplex.

\*7 Scanning limitations brought about by scanning mode, document size and available memory may occur when scanning at higher resolutions (600 dpi or higher).

\*8 Excluding the ADF hopper.

## ■ Options

Description	Parts number	Comments
Post Imprinter (Front-side) (fi-680PRF)	PA03575-D201	The imprinter option enables users to print information on original documents for document management purposes. While the fi-680PRF (post imprinter) prints information on the front of documents, the fi-680PRB (post imprinter) prints information on the reverse-side of documents after they have been scanned. Although both the fi-680PRF and the fi-680PRB may be attached to the same scanner unit, both imprinters cannot be used simultaneously.
Post Imprinter (Back-side) (fi-680PRB)	PA03575-D203	

## ■ Consumables

Description	Parts number	Comments
Pick Roller	PA03575-K011	Lifetime: Every 600,000 sheets or one year. These rollers feed documents into the scanner.
Separator Roller	PA03575-K012	Lifetime: Every 600,000 sheets or one year. These rollers feed documents through the scanner.
Brake Roller	PA03575-K013	Lifetime: Every 600,000 sheets or one year. These rollers separate documents as they are being fed into the scanner.
Print Cartridge	CA00050-0262	Lifetime: 4,000,000 characters fi-680PRF and fi-680PRB print head

## ■ Trademarks

\* ISIS is a registered trademark of EMC Corporation in the United States.

\* Microsoft, Windows, Windows Server and Windows Vista are either registered trademarks or trademarks of Microsoft Corporation in the United States and/or other countries.

\* Other company names and product names are the registered trademarks or trademarks of the respective companies.

### ⚠ Safety Precautions

- Be sure to carefully read all safety precautions prior to using this product and use this device as instructed.
- Do not place this device in wet, moist, steamy, dusty or oily areas. Using this product under such conditions may result in electrical shock, fire or damage to this product.
- Be sure to limit the use of this product to listed power ratings.

Visit the fi Series web site for ordering and purchasing information

<http://imagescanner.fujitsu.com/>



PFU Limited, a Fujitsu company, has determined that this product meets the ENERGY STAR® guidelines for energy efficiency. ENERGY STAR® is a registered trademark of the United States.