

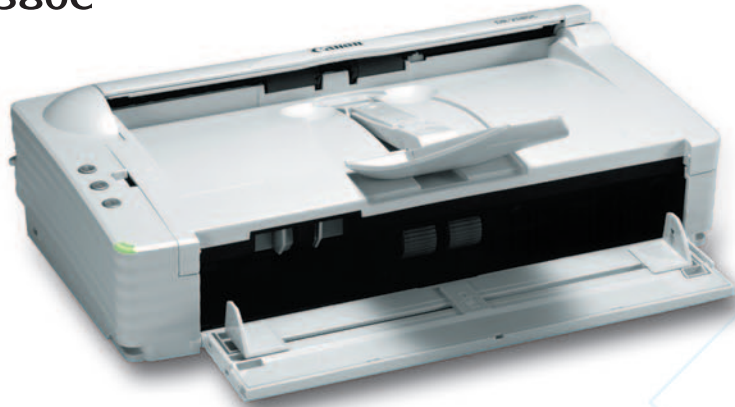
Canon

 **imageFORMULA**
DR-2580C





imageFORMULA DR-2580C



Compact, Portable Power

Canon is recognized for its ability to transform the latest technology into practical applications. The award-winning, powerful Canon imageFORMULA DR-2580C color scanner is no exception. It's both compact and portable, for the desktop or on the road.

A Desktop Scanner That Handles It All

Among the first in the document scanner industry's workgroup segment to feature Ultrasonic Double-Feed Detection, the imageFORMULA DR-2580C scanner incorporates production-level features in a compact, portable design. Built to boost productivity, it's capable of scanning at speeds of up to 25 pages or 50 images per minute.*

For maximum document handling flexibility, the DR-2580C scanner offers two feeding mechanisms, U-turn Paper Path and Straight Path. The DR-2580C scanner is capable of handling mixed document types, such as thick documents, multiple forms, and plastic cards. Batch scanning is a one-step process—simply drop mixed paper sizes into the 50-sheet ADF and press the Start button. Additionally, the DR-2580C scanner can easily handle large documents up to 39.4" in Long Document Mode or the occasional 11" x 17" in Folio Mode. For added versatility, the scanner can be paired with either a full or half letter-sized flatbed scanner unit to scan books, fragile documents, or passports.

Loaded with Powerful Image Processing Software

The Canon DR-2580C color scanner arrives bundled with CapturePerfect®, Nuance eCopy PDF Pro Office, ScanSoft PaperPort, NocoSon EasyConnect (available via D/L), Nuance OmniPage SE, Presto! BizCard SE, and Kofax VirtualReScan, so it's ready to use right out of the box. Plus, it's packed with intuitive features that give control of the image capturing process.

CapturePerfect is a robust, out-of-the-box document imaging application that maximizes the performance of DR-Series scanners, making it possible to scan, view, save, distribute, and print office documents more easily than ever before. Plus, CapturePerfect is compatible with every feature on the Canon DR-2580C scanner and offers a number of post-scan image editing functions. Equally important, users can save files in TIFF, BMP, JPEG, searchable PDF for easier document retrieval, or encrypted PDF for security-sensitive documents. The software also offers several powerful features such as full-text OCR, file name indexing capabilities, folder capacity monitoring, and the ability to add/replace pages. An optional Barcode Software Module automates many workflow processes, including indexing, batch separation, and forms recognition.

* Examples based on typical settings, rated in pages/images per minute with letter-sized documents at 200 dpi unless otherwise specified. Actual processing speeds may vary based on PC performance and application software.



Advanced Scanning Technology in a Small Package

The DR-2580C scanner is not only one of the smallest and most versatile in its class, but it's also incredibly easy to use.



Scan-To-Job Buttons for
One-Touch Operation

For one-touch operation, simply assign the most common functions to its customizable Scan-To-Job Buttons. Enhance black-and-white scans with the Contrast Adjustment feature that sharpens images and makes text more distinctive on low-contrast documents. Consistently capture high-

quality images thanks to three-Dimensional Color Correction technology, and automatically adjust shading prior to each and every scan job with the built-in shading board.

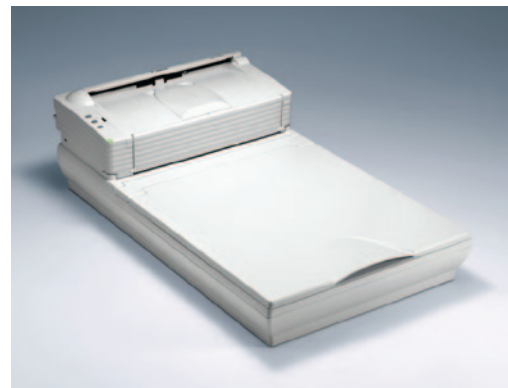
The DR-2580C scanner also includes the Rapid Recovery System, which sends only completed image data to the application software, offering seamless scanning operation should a feeding error occur. And the Punch Hole Removal function removes the black dots that appear when scanning pages from booklets or binders.



Straight Path for Card Scanning

From the Leader in Imaging Technology

Compact, powerful, and fast. The Canon imageFORMULA DR-2580C color scanner is designed to meet the diverse imaging needs of any busy office. This innovative scanner offers the most advanced features in document scanning. Boasting record speeds for scanning and saving to searchable PDF has earned the DR-2580C scanner PC Magazine's Editors' Choice award and the Buyers Laboratory Inc. "Recommended" award. Not surprising since it's from Canon, the brand the world relies on for the latest solutions in imaging technology.



DR-2580C Scanner with Optional Flatbed Scanner

Specifications

Type:	Workgroup Scanner	
Document Feeding:	Automatic or Manual Sheetfed	
Document Size		
Width:	2.1" - 8.5"	
Length:	2.8" - 14" (Up to 39.4" Long Document Mode)	
Document Weight		
U-turn Path		
Automatic Feeding:	14 - 32 lb. Bond	
Manual Feeding:	11 - 40 lb. Bond	
Straight Path		
Automatic Feeding:	11 - 40 lb. Bond	
Manual Feeding:	11 - 40 lb. Bond	
ADF Capacity:	50 Sheets	
Grayscale:	8-bit	
Color:	24-bit	
Scanning Element:	CMOS CIS	
Light Source:	RGB LED	
Scanning Modes:	Simplex, Duplex, Color, Grayscale, Black and White, Error Diffusion, Advanced Text Enhancement	
Color Dropout:	RGB	
Optical Resolution:	600 dpi	
Output Resolution:	100/150/200/240/300/400/600 dpi	
Scanning Speeds*	Simplex	Duplex
Black and White:	Up to 25 ppm	Up to 50 ipm
Grayscale:	Up to 25 ppm	Up to 50 ipm
Color (150 dpi):	Up to 17 ppm	Up to 32 ipm
Interface:	Hi-Speed USB 2.0	
Scanner Drivers:	ISIS/TWAIN for Windows® 2000/XP/Windows Vista®	
Dimensions (H x W x D):	3.2" x 12.0" x 6.6"	
Weight:	4.2 lb.	
Power Consumption:	19W or Less (Energy Saving Mode: 6W or Less)	
Suggested Daily Volume:	Approximately 1,500 Scans	

BUNDLED SOFTWARE

- ISIS/TWAIN Drivers
- CapturePerfect
- ScanSoft PaperPort
- Nuance eCopy PDF Pro Office
- Nuance OmniPage SE
- Nocson EasyConnect (available via D/L)
- Presto! BizCard SE
- Kofax VirtualReScan

OPTIONS

- Flatbed Unit
- Half Letter-Sized Flatbed Unit
- Barcode Software Module III
- Exchange Roller Kit
- Carrying Case
- Two-Year CarePAK

OTHER FEATURES

- Advanced Text Enhancement
- Automatic Page Size Detection
- Border Removal
- Color Dropout/Enhance Color
- Deskew
- Dual Paper Path
- Folio Mode
- Scan-To-Job Function
- Skip Blank Page
- Text Orientation Recognition
- Three-Dimensional Color Correction
- Ultrasonic Double-Feed Detection

ITEM NUMBER

0080B002

* Examples based on typical settings, rated in pages/images per minute with letter-sized documents at 200 dpi unless otherwise specified. Actual processing speeds may vary based on PC performance and application software.

** Calculations based on scanning speeds and assumed daily time of use.

NOTE: The DR-2580C scanner has been tested for compatibility with many of the industry's leading document management solution providers. Please visit the scanner's product page on Canon U.S.A.'s Web site at www.usa.canon.com for a comprehensive compatibility listing.

Canon
*image*ANYWARE

1-800-OK-CANON
www.usa.canon.com

Canon U.S.A., Inc.
 One Canon Plaza
 Lake Success, NY 11042

As an ENERGY STAR® Partner, Canon U.S.A., Inc. has determined that this product meets the ENERGY STAR guidelines for energy efficiency. ENERGY STAR and the ENERGY STAR mark are registered U.S. marks. IMAGEFORMULA and CapturePerfect are registered trademarks of Canon Electronics Inc. CANON is a registered trademark of Canon Inc. in the United States and may also be a registered trademark or trademark in other countries. CAREPAK is a registered trademark of Canon U.S.A., Inc. IMAGEANYWARE is a trademark of Canon. All other referenced product names and marks are trademarks of their respective owners and are hereby acknowledged. Some items may not be available at this time; please check for availability. Specifications and availability subject to change without notice.
 ©2011 Canon U.S.A., Inc. All rights reserved.