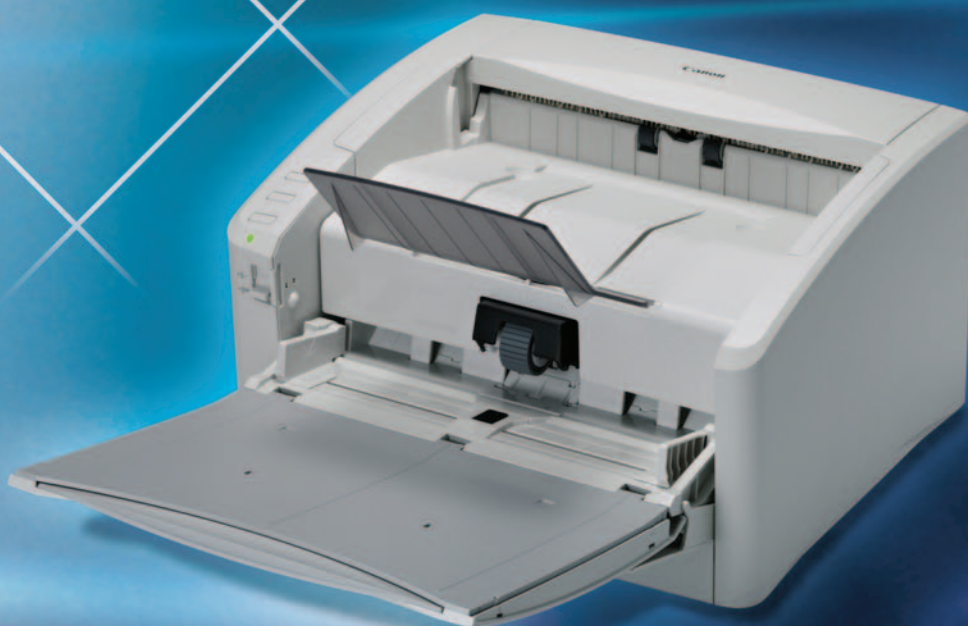


**Canon**

 **imageFORMULA**

**DR-6010C**

**DR-4010C**



 **imageFORMULA**  
**DR-6010C**  
**DR-4010C**



## Increasing the Capabilities While Decreasing the Size

The imageFORMULA DR-6010C and DR-4010C departmental scanners deliver high-speed, reliable document handling and high-quality images in a small package. Flexibility, rich features, and ease of use help maximize return on investment at all levels of the business system.

### Speed to Suit User Needs

Employees in paper-intensive environments find themselves looking for standards to alleviate the document conversion process. The DR-6010C/4010C scanners employ technologies such as an advanced three-line CIS sensor and onboard file compression capabilities, enabling prompt transition of hard-copy documents into electronic files at fast speeds.

#### **imageFORMULA DR-6010C**

- Scanning speeds of up to 60 pages/120 images per minute in color, grayscale, and black and white.\*

#### **imageFORMULA DR-4010C**

- Scanning speeds of up to 42 pages/84 images per minute in color, grayscale, and black and white.\*\*

The DR-6010C/4010C scanners save users time and keep them on pace with laborious business workflows.

### Flexible Capabilities for Seamless Document Handling

Users with pressing document capture needs not only require fast scanning speeds to lessen their workloads, but they must also reduce preparation time and increase unattended batch scanning time. The DR-6010C/4010C scanners exercise a diverse set of features to achieve these goals. With capabilities such as Ultrasonic Double-Feed Detection, straight paper path, and Long Document Mode, the DR-6010C/4010C scanners can reliably accommodate a wide variety of documents, including plastic cards, fragile or thick documents, and documents up to 118" in length. The DR-6010C/4010C scanners are a flexible solution for users with varied batch scanning needs.



## Dedicated Features for Detailed Image Capture

Canon realizes that within business workflows, users are not able to sacrifice scanning quantity for quality. The DR-6010C/4010C scanners concentrate advanced image processing features into a convenient design for precise yet rapid document capture. Scanning at resolutions up to 600 dpi, these models use image processing features such as Prevent Bleed-Through and Moiré Reduction as well as sensor Shading Mechanisms to maintain the integrity of scanned documents, without forfeiting scanning speed.

## User-Friendly Solutions for Capturing and Distributing Documents

Easy integration and user-friendly features are important when deploying scanning solutions into existing corporate workflows. To increase productivity, the DR-6010C/4010C scanners yield many user-intuitive features. Scan-To-Job buttons distribute documents directly to e-mail, printer, and other standard destinations, with one-touch access to customizable or preprogrammable scan tasks. The DR-6010C/4010C scanners are bundled with Canon CapturePerfect, Nocon EasyConnect (available via D/L), and Kofax VirtualReScan, the most recent document imaging software for capturing and distributing newly created electronic files. This provides the first step in the Enterprise Content Management process.

## Environment in Mind

The DR-6010C/4010C scanners have been designed with Canon's initiative to take an environmental approach to product design and life cycle. For example, the scanners can be synchronized to automatically turn on and off, according to the status of the connected PC, and feature a Standby Mode to conserve power. These scanners also meet the ENERGY STAR® guidelines for energy efficiency, and also comply with the RoHS and WEEE directives for reduction of hazardous substances and waste products.



\* Examples based on typical settings, rated in pages/images per minute with letter-sized documents, portrait feeding direction, up to 200 dpi. Actual processing speeds may vary based on PC performance and application software.

\*\* Examples based on typical settings, rated in pages/images per minute with letter-sized documents, portrait feeding direction, up to 300 dpi. Actual processing speeds may vary based on PC performance and application software.



## Specifications

<b>Type:</b>	Departmental Scanner	
<b>Document Feeding:</b>	Automatic or Manual	
<b>Document Size</b>		
Width:	2.1" - 8.6"	
Length:	2.8" - 14"	
Long Doc. Mode:	Up to 118"	
<b>Document Weight</b>		
<b>U-Turn Path</b>		
Automatic Feeding:	14 - 32 lb. Bond	
Manual Feeding:	11 - 144 lb. Bond	
<b>Straight Path</b>		
Automatic Feeding:	14 - 32 lb. Bond	
Manual Feeding:	11 - 40 lb. Bond	
<b>Feeder Capacity:</b>	100 Sheets	
<b>Grayscale:</b>	8-bit	
<b>Color:</b>	24-bit	
<b>Scanning Element:</b>	Three-Line Contact Image Sensor (CMOS)	
<b>Light Source:</b>	RGB LED	
<b>Scanning Modes:</b>	Simplex, Duplex, Color, Grayscale, Black and White, Error Diffusion, Advanced Text Enhancement (Three Types)	
<b>Color Dropout:</b>	RGB and Custom	
<b>Optical Resolution:</b>	600 dpi	
<b>Output Resolution:</b>	100/150/200/240/300/400/600 dpi	
<b>Scanning Speeds</b>		
<b>DR-6010C</b>	<b>Simplex</b>	<b>Duplex</b>
Black and White:	60 ppm*	120 ipm*
Grayscale:	60 ppm*	120 ipm*
Color:	60 ppm*	120 ipm*
<b>DR-4010C</b>	<b>Simplex</b>	<b>Duplex</b>
Black and White:	42 ppm**	84 ipm**
Grayscale:	42 ppm**	84 ipm**
Color:	42 ppm**	84 ipm**
<b>Interface:</b>	Hi-Speed USB 2.0/SCSI-III	
<b>Scanner Drivers:</b>	ISIS/TWAIN for Windows® 2000/XP/Windows Vista®	
<b>Dimensions (H x W x D):</b>	7.3" x 12.5" x 10.9"	
<b>Weight</b>		
DR-6010C:	14.3 lb.	
DR-4010C:	14.1 lb.	
<b>Power Consumption</b>		
DR-6010C:	33W or Less (Energy Saving Mode: 3W or Less)	
DR-4010C:	25W or Less (Energy Saving Mode: 3W or Less)	
<b>Suggested Daily Volume</b>		
DR-6010C:	7,500 Scans***	
DR-4010C:	5,000 Scans***	

### BUNDLED SOFTWARE

- ISIS/TWAIN Drivers
- Canon CapturePerfect
- Nocsion EasyConnect (available via D/L)
- Kofax VirtualReScan

### OPTIONS

- Flatbed Scanner Unit 101
- Exchange Roller Kit
- Barcode Module III
- One-Year CarePAK
- Two-Year CarePAK

### OTHER FEATURES

- Auto Color Detection
- Auto Page Size Detection
- Batch Separation
- Custom Color Dropout/Enhance Color
- Deskew
- Folio
- Moiré Reduction
- MultiStream™
- Pre-Scan
- Prevent Bleed-Through/Remove Background
- Punch Hole Removal
- Rapid Recovery System
- Skip Blank Page
- Text Orientation Recognition
- Ultrasonic Double-Feed Detection
- User Registration

### ITEM NUMBER

DR-6010C: 3801B002  
 DR-4010C: 1321B002

\* Examples based on typical settings, rated in pages/images per minute with letter-sized documents, portrait feeding direction, up to 200 dpi. Actual processing speeds may vary based on PC performance and application software.

\*\* Examples based on typical settings, rated in pages/images per minute with letter-sized documents, portrait feeding direction, up to 300 dpi. Actual processing speeds may vary based on PC performance and application software.

\*\*\* Calculations based on scanning speed and assumed daily time of use.


  
*image*ANYWARE

1-800-OK-CANON  
 www.usa.canon.com

Canon U.S.A., Inc.  
 One Canon Plaza  
 Lake Success, NY 11042

As an ENERGY STAR® Partner, Canon U.S.A., Inc. has determined that these products meet the ENERGY STAR guidelines for energy efficiency. ENERGY STAR and the ENERGY STAR mark are registered U.S. marks. IMAGEFORMULA and CapturePerfect are registered trademarks of Canon Electronics Inc. CANON is a registered trademark of Canon Inc. in the United States and may also be a registered trademark or trademark in other countries. CAREPAK is a registered trademark of Canon U.S.A., Inc. IMAGEANYWARE is a trademark of Canon. All other referenced product names and marks are trademarks of their respective owners and are hereby acknowledged. Some items may not be available at this time; please check for availability. Specifications and availability subject to change without notice.  
 ©2011 Canon U.S.A., Inc. All rights reserved.