

Color

**RTIV** Reliable  
Throughput  
Imaging  
Viewer  
PDF directly



# dynamic

Color Document Scanner  
KV-S2048C

- Reliable Ultrasonic Double-Feed Detection
- Full Color Duplex Scanning
- High Durability and Reliable Paper Handling
- Advanced Image Enhancement Technology



Panasonic **ideas for life**



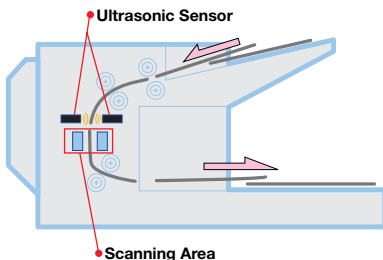
# The Right Stuff – Reliable Document Support for Any Department

The Panasonic KV-S2048C is the ideal way to upgrade your department's document management capabilities. With its duplex color scanning capability and its consistently reliable paper handling, the KV-S2048C is ready to handle the document management needs of virtually any department.



## Reliable Ultrasonic Double-Feed Detection

The KV-S2048C's double-feed prevention roller employs an ultrasonic sensor that detects the double feeding of originals during scanning. This innovative design prevents double feeding, and has been proven effective even when the documents being scanned contain a mix of paper of different weights or thickness. Thanks to double-feed prevention, optimum reliability is assured even when scanning high-volume documents.



## High Durability and Reliable Paper Handling

Despite a compact desktop design, the KV-S2048C features a rugged, high durability design and reliable paper handling. With a 3-million page scanning capability that's at the top of its class, this versatile high-speed scanner provides the extra performance required for heavy scanning demands, easily handling a wide range of paper weights from 13.3 lbs. to 33.9 lbs. (50 to 127 g/m<sup>2</sup>).



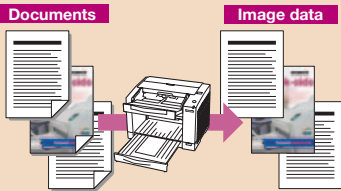
## KV-S2048C Specifications

Scanning	Duplex
Scanning Method	CIS (Contact-type color image sensor) Front and back sides Black background (Black sensor roller)
Scanning Speed*1 (Letter, Portrait)	Binary 200 dpi    Simplex 43 ppm Duplex 76 ppm Color 150 dpi    Simplex 19 ppm Duplex 34 ppm
Resolution	100 - 600 dpi (10 dpi step) Optical 600 dpi (Main and Sub scanning direction)
Output	Binary mode, Gray Scale mode (4/8 bit), 24 bit color
Image Control	Image Emphasis 5 steps (Smooth, None, Low, Medium, High), Error Diffusion, Dynamic Threshold, Noise Reduction, Moire Reduction, Color Matching, De-skew, Blank Page Removal, Automatic Binary / Color Distinction
Other Functions	Patch Code Detection (Kodak-2, Kodak-3, Kodak-T by image filter of ISIS driver) Separation Sheet Detection, Barcode Detection (by image filter of ISIS driver), Length Control
Documents*2	Feeding size    2.0" x 2.8" (50.8 x 70 mm) to 8.5" x 25" (216 x 635 mm) Weight            Single paper feeding: 10.7 to 33.9 lbs. (40 to 127 g/m <sup>2</sup> ) Continuous paper feeding: 13.3 to 33.9 lbs. (50 to 127 g/m <sup>2</sup> ) Note: 1 lb=3.75 g/m <sup>2</sup>
	Thickness        Single paper feeding: 2.0 to 5.9 mils (0.05 to 0.15 mm) Continuous paper feeding: 2.36 to 5.9 mils (0.06 to 0.15 mm) Note: 1 mil=1/1000 in.
Automatic Detection	Ultrasonic double-feed detection
Interface	USB 2.0
Feed Tray Capacity	100 sheets: 20 lbs. (75 g/m <sup>2</sup> ) 120 sheets: 17 lbs. (64 g/m <sup>2</sup> )
External Dimensions*3	13.5" x 19.2" x 10.6" (343 x 487 x 269 mm) when tray is extended 13.5" x 11.7" x 9.4" (343 x 296 x 239 mm) when tray is stored
Weight*3	20.1 lbs. (9.1 kg)
Power Requirements	AC 100-120 V, 50/60 Hz
Power Consumption	Scanning        50 W Standby Mode   13 W Sleep Mode     3.5 W
Operating Environment	Temperature: 59°F - 86°F (15°C - 30°C) Humidity: 30% - 80% RH (No dewdrop)
Storage Environment	Temperature: 32°F - 95°F (0°C - 35°C) Humidity: 10% - 80% RH (No dewdrop)
Accessories	Power Cord, Roller Cleaning Paper (3 pieces), CD-ROM: (Device Driver, RTIV Capture Software, ISIS Driver Software, TWAIN Driver Software, User Utility, Quick Scan Pro (DEMO), PIE Manual, RTIV Manual, Warranty Card, Operating Instructions Manual, User Utility Manual), Shading Paper, USB Cable, Installation Guide
Consumables / Options	KV-SS023: White Roller Kit KV-SS024: Roller Exchange Kit (with Black sensor roller) KV-SS025: Roller Exchange Kit (with White sensor roller) KV-SS03: Roller Cleaning Paper KV-SS032: Pre-imprinter KV-SS021: Ink Cartridge

## Versatile applications

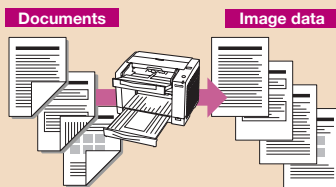
### Eliminate the need to pre-sort Automatic Binary / Color Distinction

Thanks to Auto Color/Monochrome Distinction, you can mix color and monochrome (B/W) originals at the same time for greater efficiency and reduced data storage.



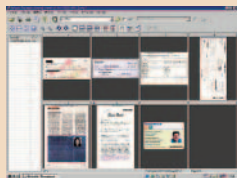
### Reduce storage space Blank Page Removal

Blank pages are automatically deleted during scanning to keep the scanned file size to a minimum. This allows you to scan a batch of documents that include blank pages without the need to eliminate them during a pre-sorting process.



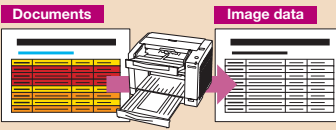
### Eliminate post-processing Auto Color Cropping/De-Skew

Documents of various sizes can be scanned without individual paper size settings. Auto Color Cropping crops the scanned image to its actual size while Auto De-Skew automatically corrects skewing.



### Readability and accuracy Dynamic Threshold

With the Dynamic Threshold function, the background density is automatically detected section by section and the scan setting (brightness control) is automatically adjusted for clearer results as well as OCR accuracy.



# Panasonic®

Panasonic Digital Document Company  
Unit of Panasonic Corporation of North America  
One Panasonic Way, Secaucus, NJ 07094  
www.panasonic.com/scanners

\*1 The scanning speed depends on the test environment. The Scanning speeds may differ depending on the host computer, operating environment, or application.

\*2 "Weight in pounds" of paper represents the weight of 500 sheets (17 x 22 inches/432 x 559 mm).

\*3 Dimensions and weight are approximate.

ENERGY STAR® and the ENERGY STAR® certification marks are registered US marks. RTIV™ is a trademark of Matsushita Electric Industrial Co., Ltd. MultiStream™, ISIS® and ISIS-Certified™ are trademarks of Pixel Translations, a division of EMC Corporation. All other brand or product names are the property of their respective holders.



Design and specifications are subject to change without notice.



As an ENERGY STAR® partner, Panasonic has determined that this product meets the ENERGY STAR® guidelines for energy efficiency.